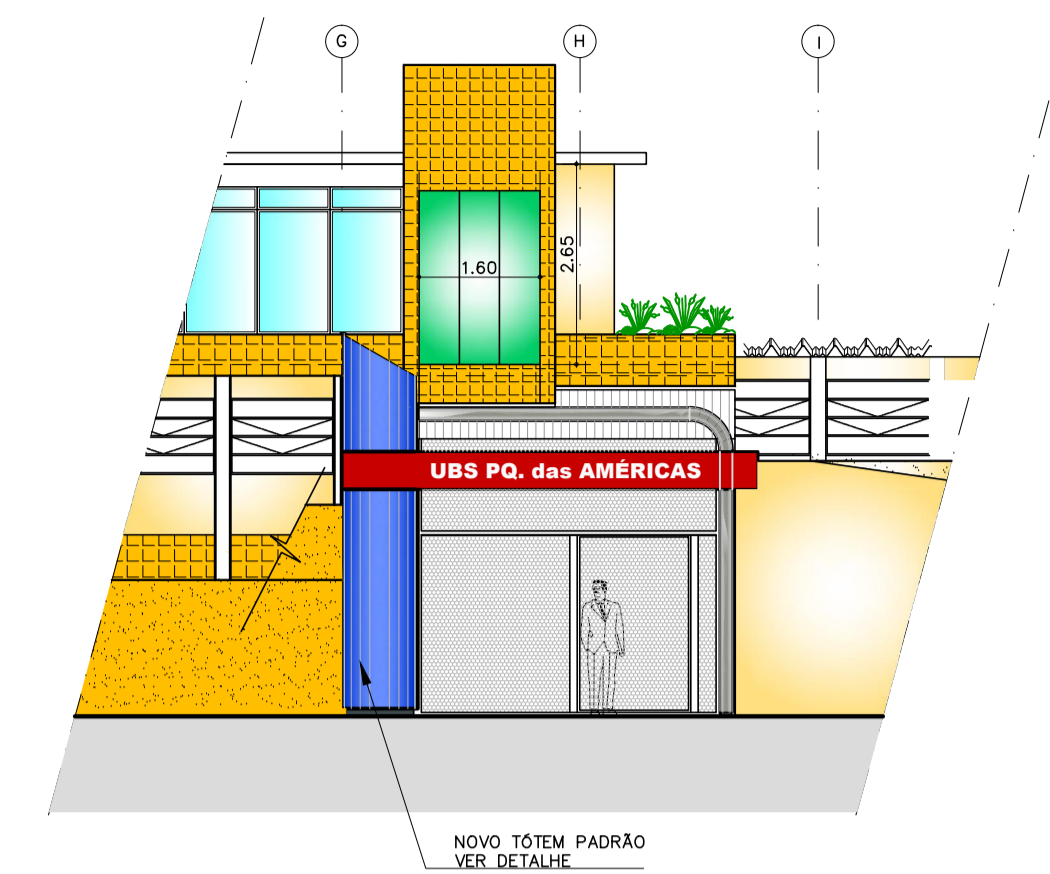
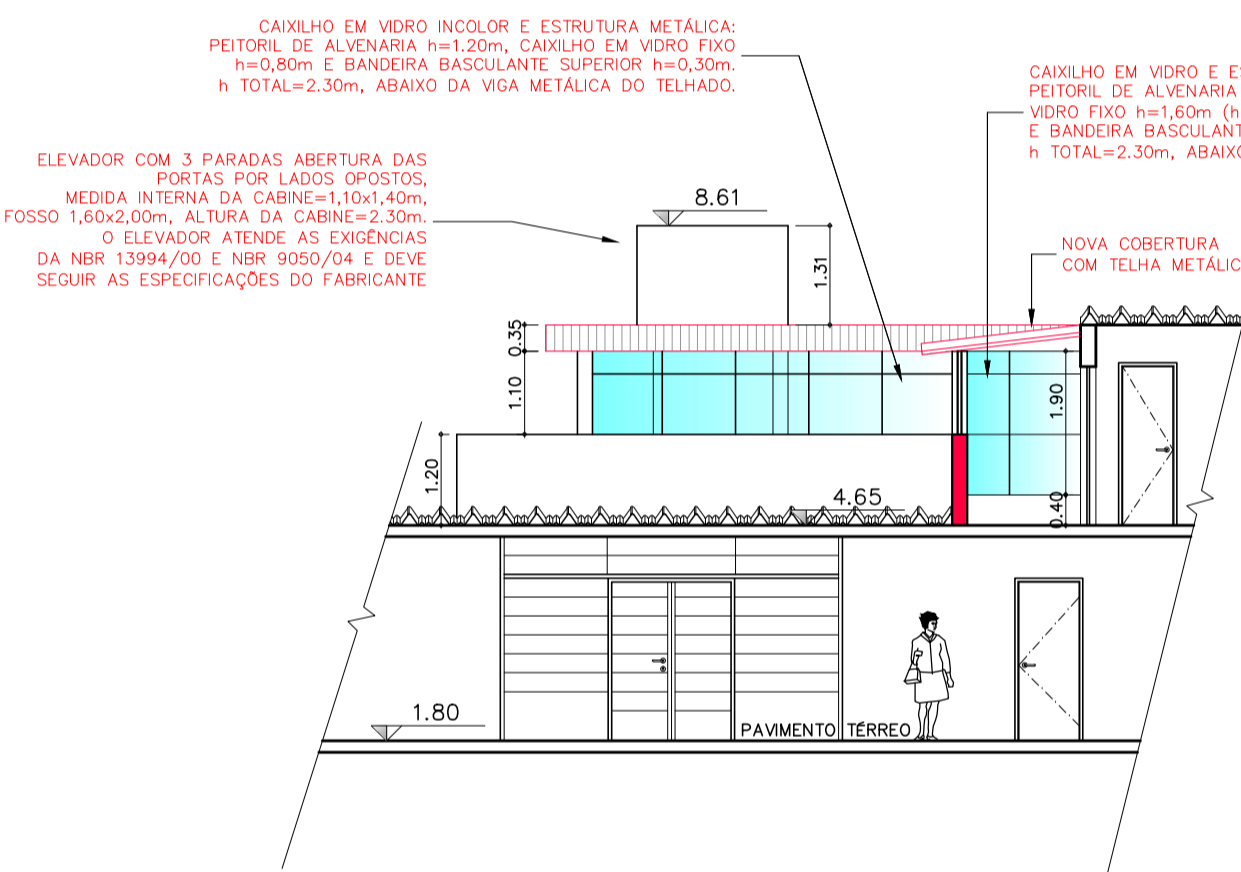


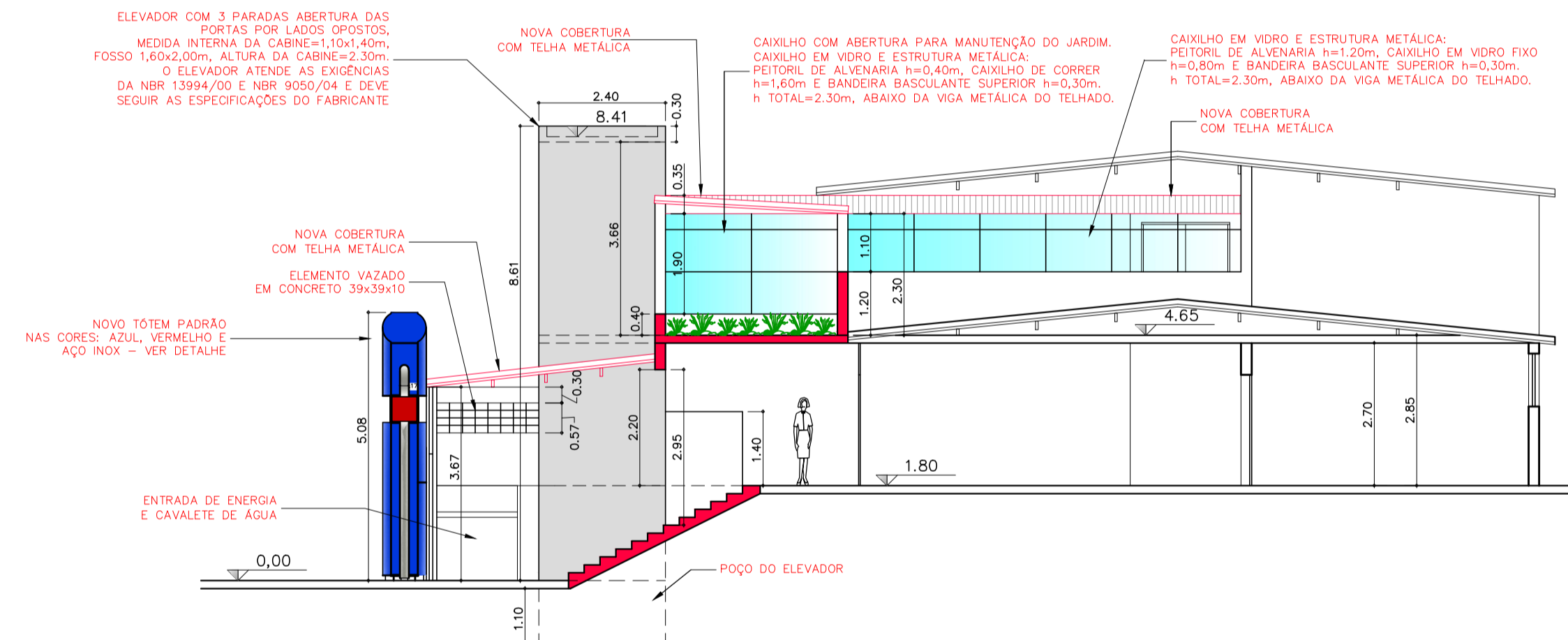
00 UBS PQ. AMÉRICAS  
FACHADA PRINCIPAL ESCALA 1:100



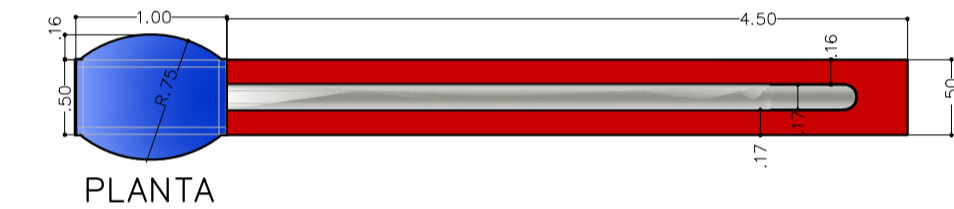
00 UBS PQ. AMÉRICAS  
FACHADA C/ TÔTEM ESCALA 1:100



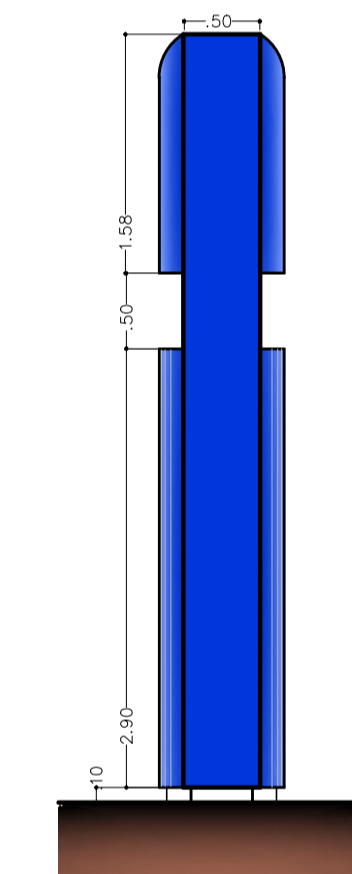
00 UBS PQ. AMÉRICAS  
CORTE BB ESCALA 1:100



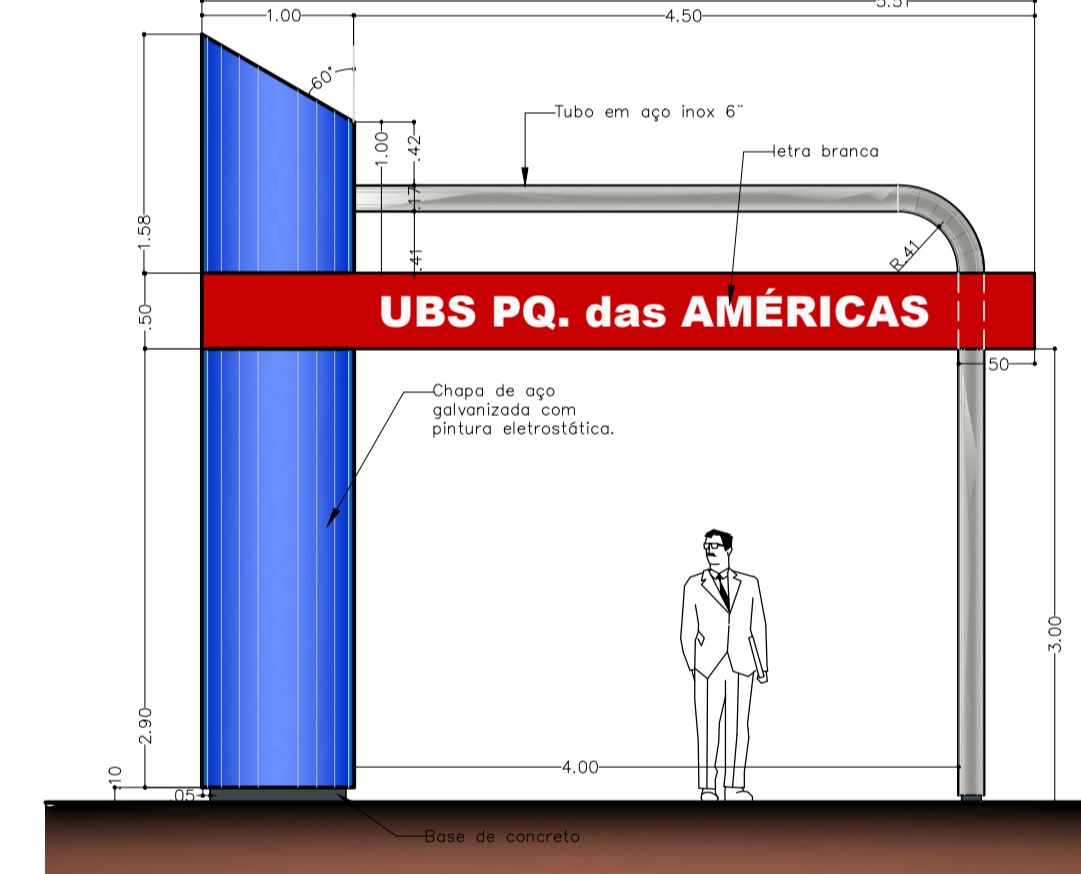
00 UBS PQ. AMÉRICAS  
CORTE AA ESCALA 1:100



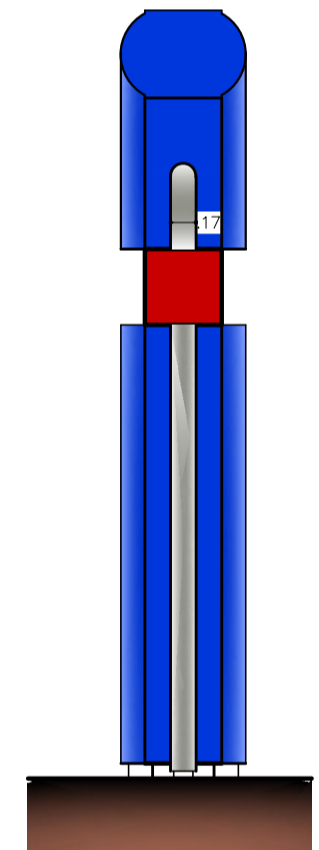
PLANTA



LATERAL ESQUERDA

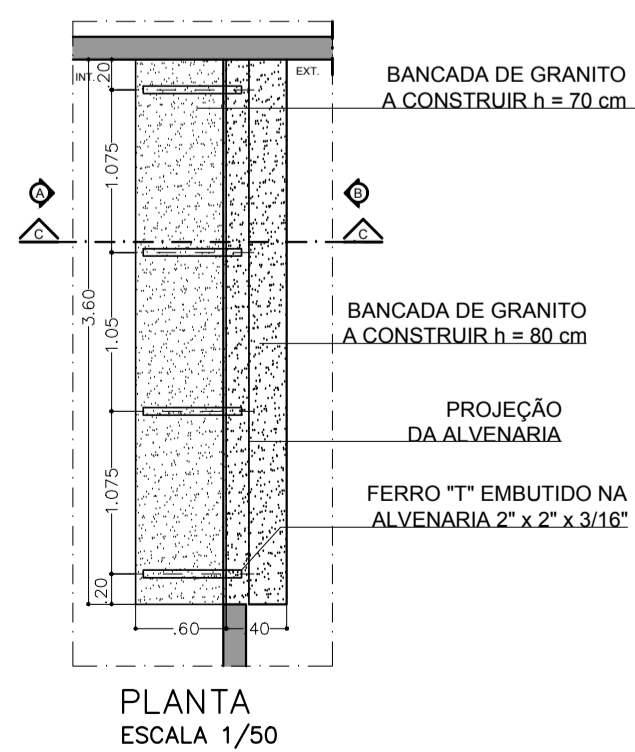


VISTA FRONTAL

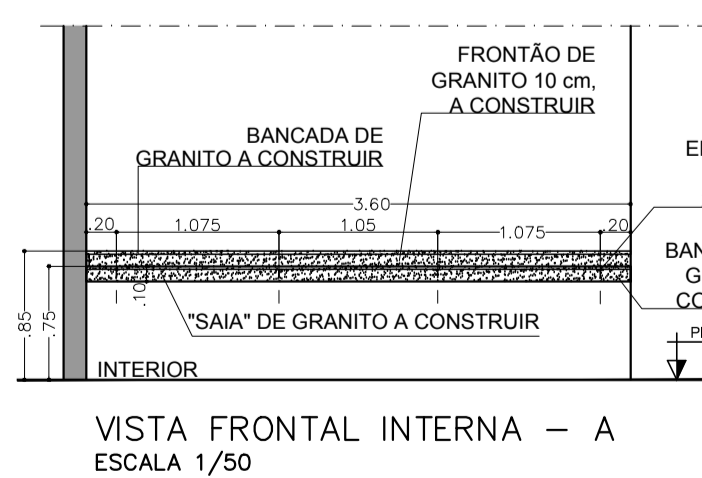


LATERAL DIREITA

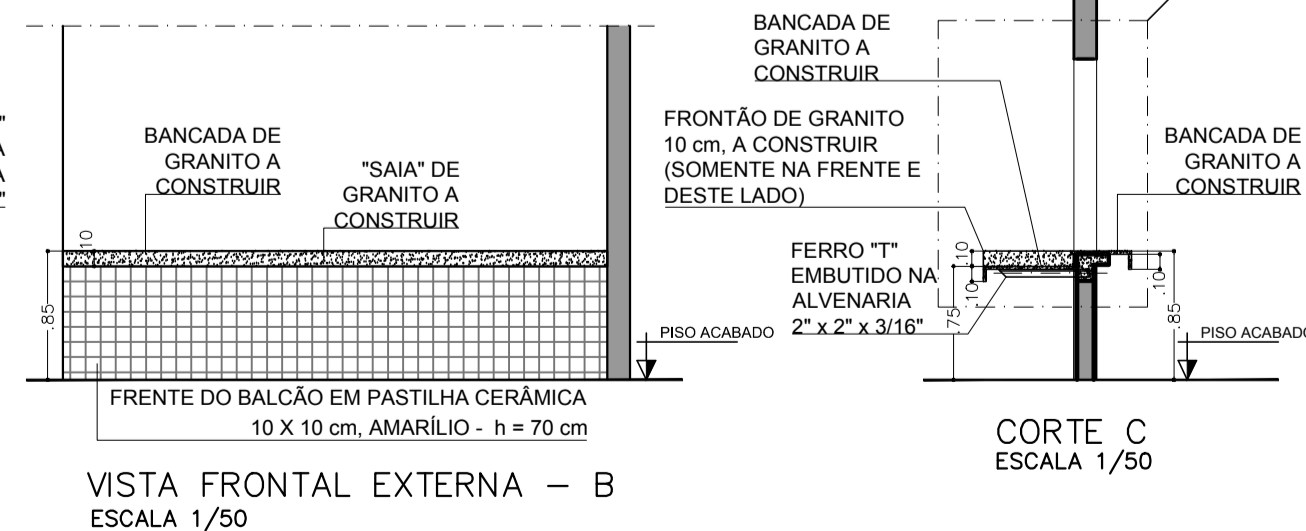
00 UBS PQ. AMÉRICAS  
DETALHE TÔTEM ESCALA 1:50



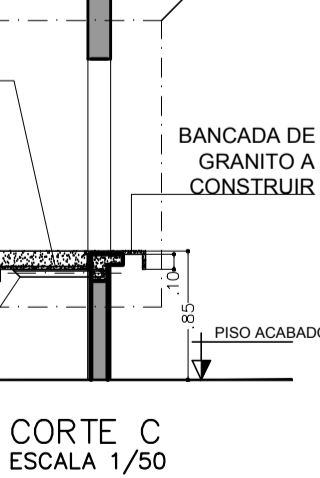
PLANTA  
ESCALA 1/50



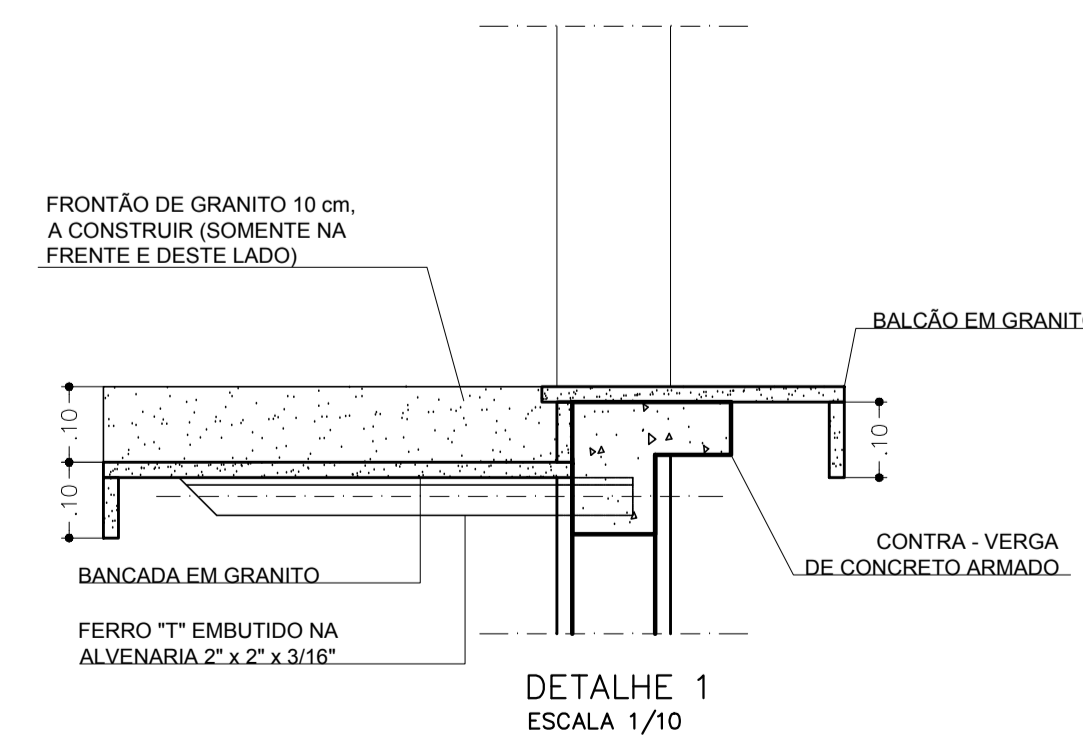
VISTA FRONTAL INTERNA - A  
ESCALA 1/50



VISTA FRONTAL EXTERNA - B  
ESCALA 1/50



CORTE C  
ESCALA 1/50



DETALHE 1  
ESCALA 1/10

00 UBS PQ. AMÉRICAS  
DET. BANCÃO RECEP. ESCALA INDIC.

PREFEITURA DO MUNICÍPIO DE MAUÁ  
SECRETARIA DE OBRAS - S0 3121

PROJETO	REFORMA PARCIAL E ADEQUAÇÃO ÀS NORMAS DE ACESSIBILIDADE - UBS PQ. das AMÉRICAS			PRANCHIA	02/02
ASSUNTO	ARQUITETURA - CORTES - FACHADAS - ADAP. ELEV.			REVISÃO	00
LOCAL	RUA AMÉRICA DO NORTE, PARQUE DAS AMÉRICAS			DATA	MAIO/14
PROJETO	SO	DESENHO	ESCALA	FASE DO PROJETO	INDICADA
CONFERIDO POR:				PROJETO BÁSICO	
CONFERIDO EM:				APROVADO POR:	
				APROVADO EM:	